



SolarVeil 2200

PRIVACY FABRIC (1 to 2%)

AVAILABLE COLOURS

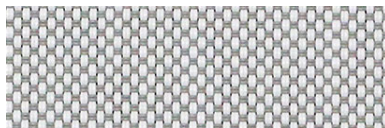
**White
SV2201**



**Eggshell
SV2216**



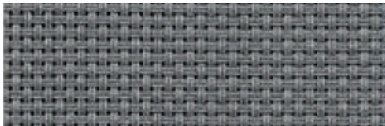
**Silver Birch
SV2219**



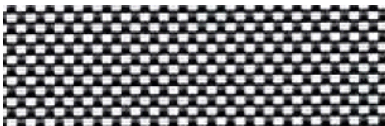
**Greystone
SV2207**



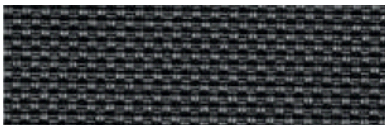
**Grey
SV2213**



**Ash
SV2220**



**Black
SV2208**



FABRIC SPECIFICATIONS

Stock Widths: Up to 118"

Openness: 1 - 2 %

**Composition: 22% Polyester
78% PVC**

Thickness: .0260"

Weight: 15.042 oz / yd²

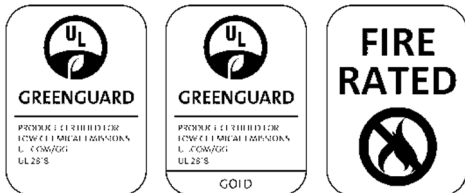
**Fire Rating: NFPA 701 / CA US Title 19
CAN/ULC-S109**

Bacterial/Fungal Resistance: ASTM G-22 | ASTM G-21

Cleaning Info: Contact Manufacturer

Spline: SnapLoc

Railroading: Not Recommended



Technologically advanced shade cloth woven in a 2 X 2 basket-weave pattern designed to provide sun glare reduction while still permitting light penetration for an external view.

If you require additional fabric samples please E-mail: samples@frasershading.com

Actual fabric colours may vary from pictures | Fabric stock levels may vary

Openness factors are approximate | Mockups are recommended

Specification subject to change without notice | ©Fraser Shading Systems 2024

