

# Colossal FlexShade



Mack Energy, Artesia, NM. Architect: Van H. Gilbert Architect PC, Albuquerque, NM.  
Design Build: Jaynes Corporation, Albuquerque, NM. Dealer: Motorized Sun Solutions, Albuquerque, NM.  
Photographer: Matt Oberer, MattOPhoto, Albuquerque, NM.

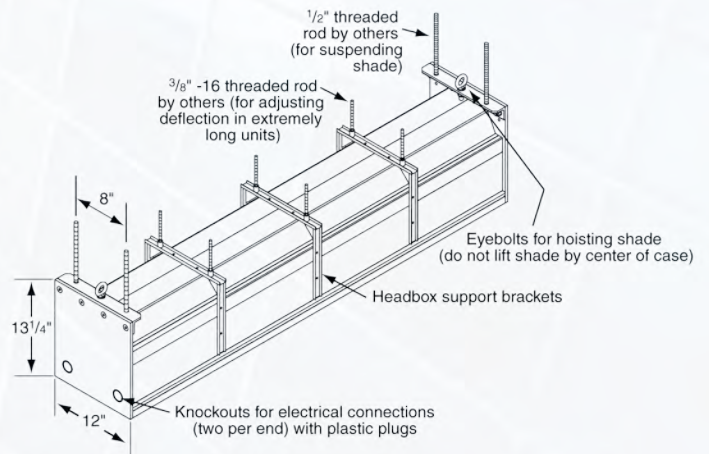
## Motorized Window Shade for Large Window Openings

Draper's Colossal FlexShade is one of the largest motorized window shades on the market today.

- Available in sizes 3' through 28'9" wide and 40' tall, depending on fabric.
- Battens are used to ensure the flattest surface possible.
- Eyebolts for hoisting the shade are provided at each end of the extruded aluminum case.
- Deflection Compensation System minimizes fabric fullness caused by case deflection.
- External controls are available. *See page 8.*

### Optional Accessories:

- Internal junction box
- Wall mount bracket kit
- Ceiling tile flange



Bottom of extruded aluminum case is fully enclosed except for slot allowing fabric passage. Bottom closure panel may be removed manually for access to roller and drive unit. Patent pending.

Dimensions, drawings and specifications available at:

[www.draperinc.com/go/Colossal.htm](http://www.draperinc.com/go/Colossal.htm)