

# SunDialer<sup>®</sup>, the economical WindowManagement<sup>®</sup> system

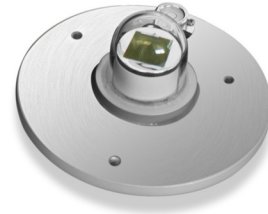
## The intelligent controller:

- Tracks the sun and adjusts shade positions on the window automatically.
- Monitors real-time sky conditions over the course of the year.
- Determines user-defined shade positions for each zone, by the profile angle of the sun, allowable solar penetration, and sky conditions.
- Controls up to 12 zones.
- Uses window geometry and window orientation for each control zone for calculating a user-adjustable solar-penetration threshold.
- Includes an event scheduler for weekly, bi-weekly, monthly, bi-monthly, or additional timed settings.
- Interprets the data logging and performance, reported by others, to continuously fine-tune the system over time.
- Is designed for small-scale and retrofitted projects for cost-effective solar control.

To enable remote support and network control, one SunDialer<sup>®</sup> IP Interface unit is required per system.



Solar radiometer



12-zone SunDialer<sup>®</sup> I-Con<sup>®</sup> with sensor ports and SunDialer IP Interface

One IP Interface required per system



12-zone SunDialer I-Con without sensor ports

May be ganged for additional zones—up to four units for 48 zones



I-Con<sup>®</sup> Gateway internal control

For 3rd-party systems